

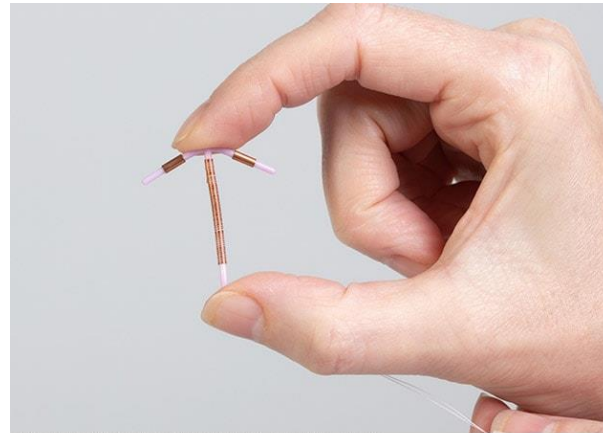
COPPER IUD

This brochure helps explain the pros and cons of Copper IUDs.

What is the Copper IUD?

An IUD is a small device which is placed inside the uterus. The vertical stem of the Copper IUD contains copper which is slowly released into the uterine cavity. The copper ions in the fluids of the uterus are toxic to sperm. The copper IUD stops sperm from making their way up through the uterus into the tubes, and it reduces the ability of sperm to fertilize the egg. The Copper IUD works primarily by preventing fertilization. Rarely, it also prevents a fertilized egg from successfully implanting in the lining of the uterus if fertilization has occurred. An IUD does not cause an abortion. Among typical couples who use the copper IUD, 1-2% will experience an accidental pregnancy in the first year.

“The copper IUD works primarily by preventing fertilization.”




© MAYO FOUNDATION FOR MEDICAL EDUCATION AND RESEARCH. ALL RIGHTS RESERVED.


HarmonyCare
family practice

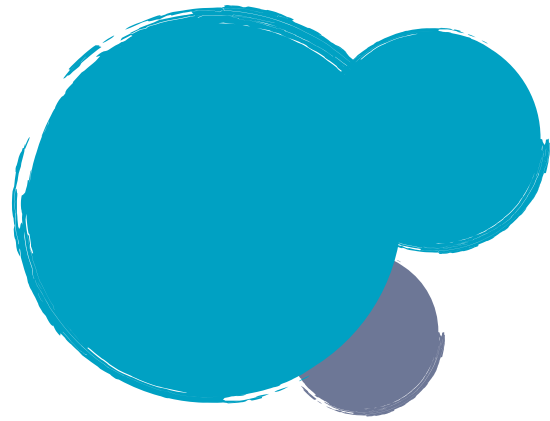


 [harmonycarefamily.com](https://www.harmonycarefamily.com)

 604-HARMONY (427-6669)

 604-200-7865

 #102, 15055 54A Ave,
Surrey, BC V3S 5X7



What are the advantages of the copper IUD?

- ✓ The Copper IUD is highly effective
- ✓ The Copper IUD is effective for 5 years. Some are effective for 10 years
- ✓ Less than 2 out of 100 women using a Copper IUD in the first year will become pregnant
- ✓ Once the Copper IUD is removed, return to baseline fertility is immediate



- ✓ The Copper IUD is very cost effective over time. It is available at HarmonyCare Family Practice at a cost of \$80. It may not be covered on drug plans because it does not contain medication however you would have to check with your insurance plan. The cost of the IUD itself is non-refundable, even in cases of failed insertion, expulsion, or unsuitability

- ✓ The Copper IUD may be used by women who cannot use estrogen-containing birth control pills, patches or vaginal rings including breastfeeding women.
- ✓ Once the Copper IUD is removed, return to baseline fertility is immediate.

What are the disadvantages of the copper IUD?

- There may be cramping, pain or spotting in the first 3-6 months after insertion.
 - The number of bleeding days or flow may be slightly higher than normal.
 - There may be an increase/change in vaginal discharge.
 - You may have somewhat increased menstrual cramping. If your bleeding pattern is bothersome to you, contact your clinician.
 - The IUD provides no protection against sexually transmitted infections. Use condoms if there is any risk.
- If you miss a period, you must get a pregnancy test and see a physician to rule out a tubal pregnancy.

**For further
information,
please speak to
your physician**

